

Opening New Horizons in **Interior Design & Common Applications**

Dividers • Wall Covers • Bathrooms & Showers • Kitchens • Balustrades & Balconies • Art & Cultural Canopies • Stained Glass • Signage & Memorial • Lighting • Table tops • Doors & Windows

Design Freedom and Functionality Control

The latest innovations in glass printing technology open new opportunities to combine boundless creativity with highly controlled functionality. Full expression of vision and outstanding budget-smart performance delivery are now possible with digital ceramic in-glass printing.

- **Easy implementation**

Of any pattern or design, with unlimited colors, and high resolution for fine details.

- **Durability and accuracy**

Inks are fused into the glass, providing unmatched resistance to scratching, acid, UV light and weather. Precise micro-drop printing allows accurate photorealistic and graphic designs.

- **A new medium for expression**

The ability to combine transparent, translucent and opaque details in any way, full freedom in colors and shades, and the possibility to create double-vision designs for different front and back experiences, are moving glass printing into the realm of tools for design.

Outstanding Functional Performance

Dip-Tech's solution for digital ceramic in-glass printing meets complex functional performance requirements. It enables control of all special elements of architectural and designed glass:

- **Translucency/opacity**
- **Light diffusion and transmission**
- **Energy efficiency**
- **Privacy levels**
- **Slip resistance**

New Era Technology

In Digital Ceramic In-Glass Printing

Sustainable Architecture

Dip-Tech's printed glass meets environmentally responsible architecture goals:

- The glass is recyclable and offers eco-friendly functionality.
 - Using this technology can assist with LEED and other environmental certification.
 - The printed glass contains no toxic heavy metals.
 - Printing a new design on glass panels is well-suited to urban renewal projects where redesigning only parts of buildings is preferable to demolition and rebuilding.
 - Over time, if elements need to be replaced or added, individual glass panels can be printed and perfectly matched to the existing panels, eliminating the cost and waste of more extensive refurbishment.
-

Budget-Smart Design

From the initial design stage, through the value engineering process, Dip-Tech assists architects, designers and consultants with calculating the long-term savings enabled by digital ceramic printed glass. If needed, Dip-Tech helps evaluate alternative ways of using digital in-glass printing, so that printed glass elements can be kept in a project, even as budgets change over time.



DIVIDERS

KANSAS UNIVERSITY HISTORY OF BASKETBALL MURAL

📍 Kansas, USA

🏠 AGNORA



ING GLOBAL



CHALLENGING THE STATUS QUO



DIVIDERS

ENVOY HOTEL

📍 Boston, USA

🏠 Alice® - GGI





DIVIDERS

PALO ALTO MEDICAL CENTER

📍 California, USA

🏗️ Alice® - GGI





DIVIDERS

SODA STREAM LABORATORY

📍 Airport-City, Israel

🏢 Phoenicia Industries





WALL COVERS

CITY SKYLINE

📍 Michigan, USA

🏢 Glassource



MERIDIAN BUSINESS CENTER

📍 St. Petersburg, Russia

RSK



WALL COVERS

HE HOMME

📍 Shen Zhen, China

🏗 POBO Glass





WALL COVERS

INTERIOR RESIDENTIAL APARTMENTS

📍 St. Petersburg, Russia

RSK





WALL COVERS

CROWN METROPOL HOTEL

📍 Burswood, Western Australia

🏗️ Cooling Brothers

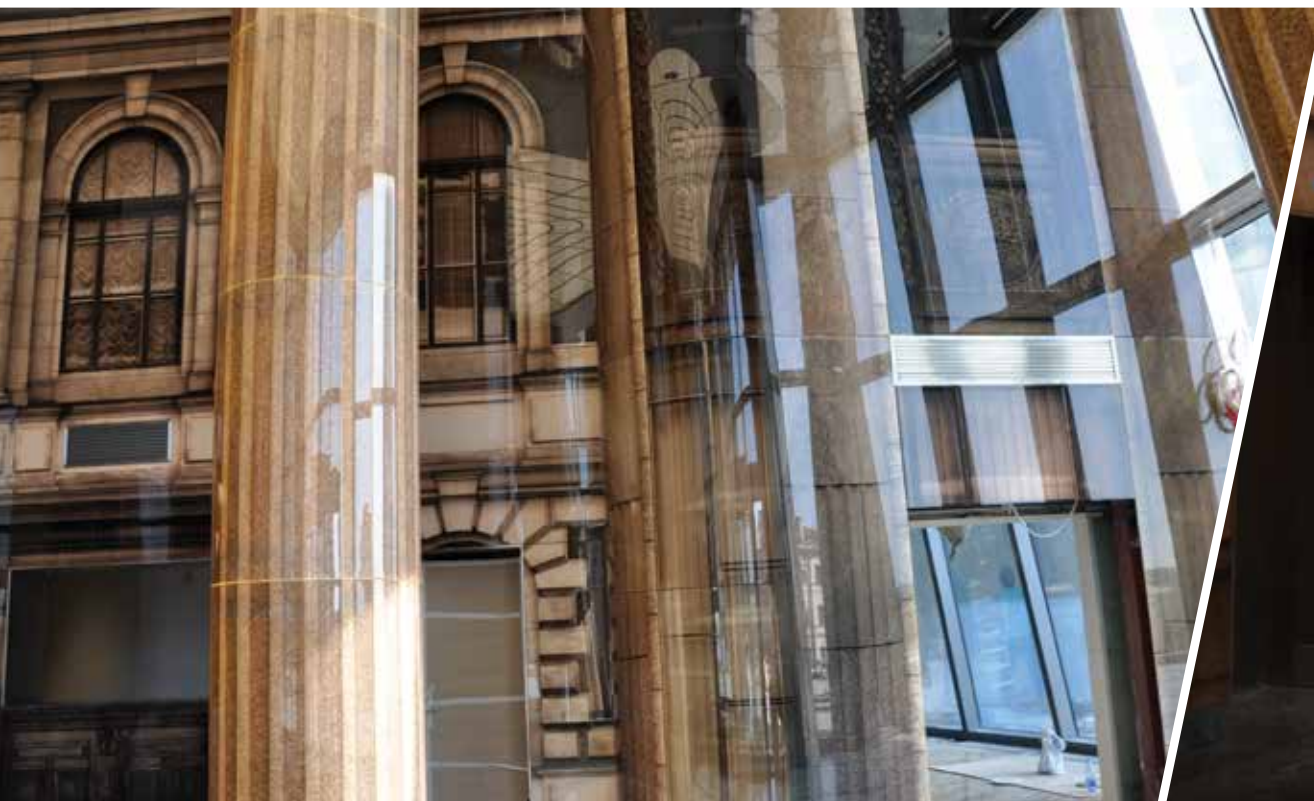




WALL COVERS

BANK OF ST. PETERSBURG

📍 St. Petersburg, Russia



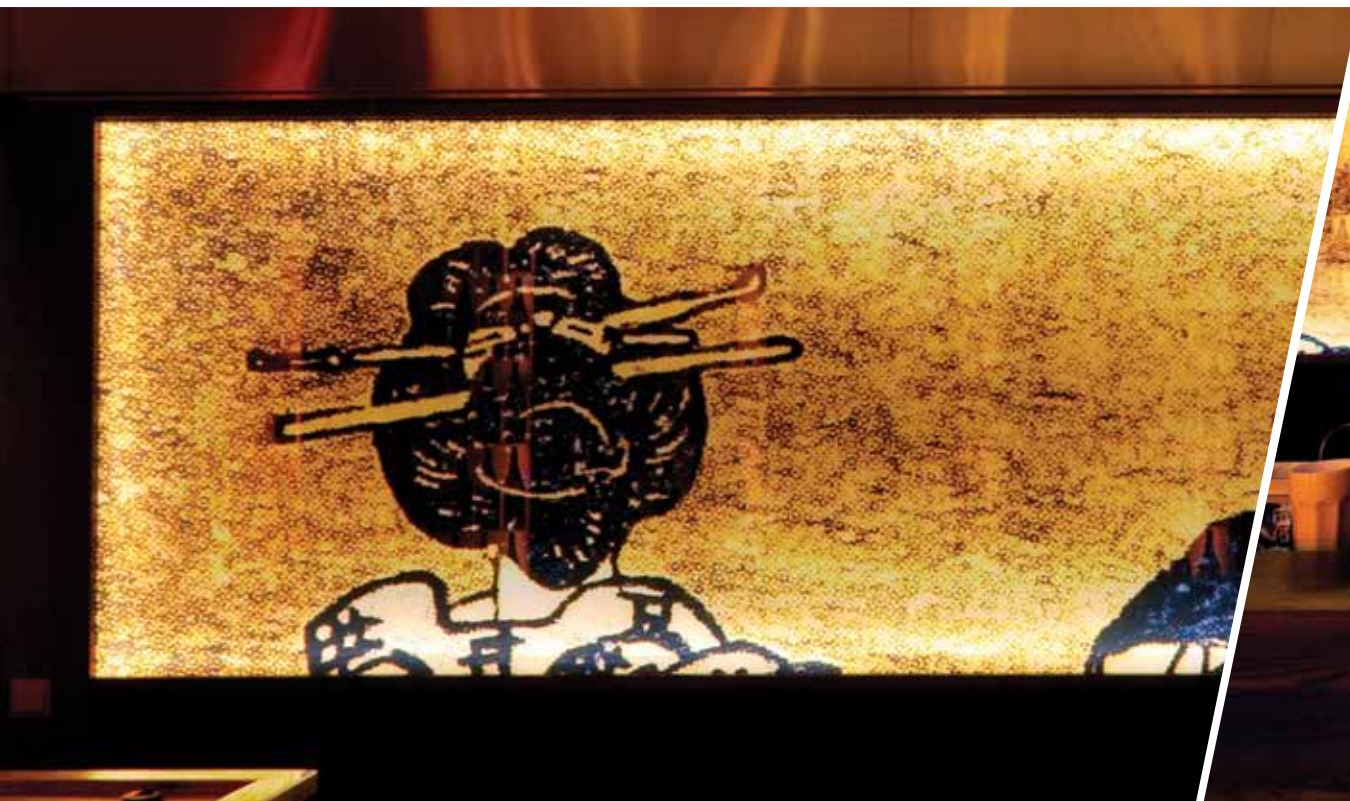


WALL COVERS

FUKU RESTAURANT

📍 Perth, Australia

🏢 Cooling Brothers





BATHROOMS & SHOWERS

STONES SINKTOP

📍 Grand Haven, USA

🏠 Glassource





BATHROOMS & SHOWERS

CUMBRES Ñ LASTARRIA, BOUTIQUE HOTEL

📍 Santiago, Chile

🏗 Glasstech, Chile





BATHROOMS & SHOWERS

BLURAN DESIGN

📍 Rishon-Lezion, Israel

🏠 AA Tempering





BATHROOMS & SHOWERS

SECRETS THE VINE

📍 Cancun, Mexico

🏢 PVA Vitro





KITCHENS

📍 Israel

🏠 Private Residences



Finland

Private Residence



BLUSTRADES & BALCONIES

LE SEMAPHORE

📍 Nantes, France

🏗️ MACOCCO Vitrages



SJÆLØR BOULEVARD RESIDENTIAL BUILDING

📍 Copenhagen, Denmark

🏢 Glaseksperten



BLUSTRADES & BALCONIES NEWARK AIRPORT

📍 New Jersey, USA

🏢 Alice® - GGI



GREEN SQUARE

📍 Melbourne, Australia

🏗️ Cooling Brothers



LIGHTING

HANOVER POST OAK

📍 Houston, TX, USA

🏢 Goldray



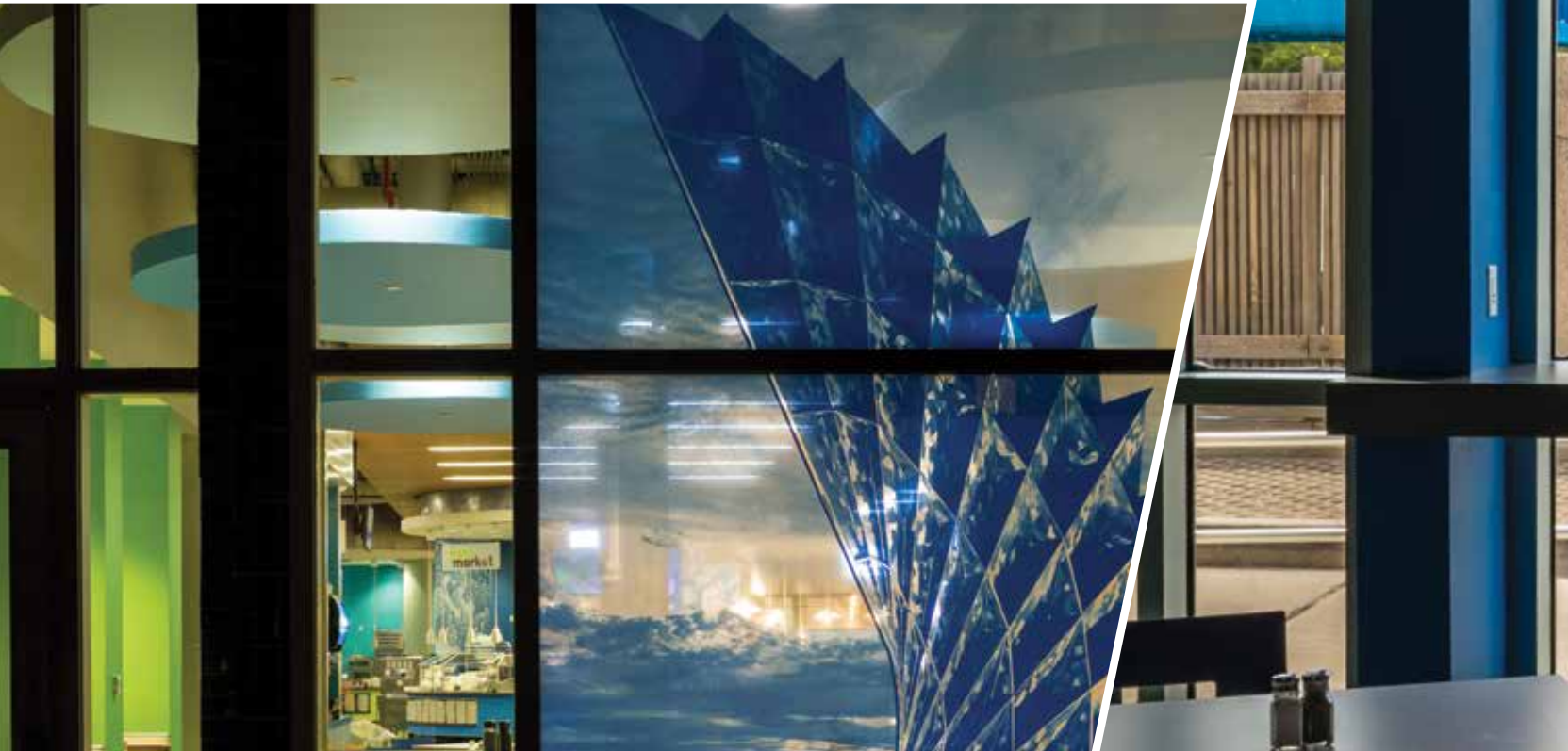


DOORS & WINDOWS

TEXAS A&M UNIVERSITY TAMU

📍 Corpus Christi, TX, USA

🏢 Goldray





DOORS & WINDOWS

📍 Suzhou, China

🏢 Jingfeng Glass





DOORS & WINDOWS

📍 Vihti, Finland

🏠 Rakla



Michigan, USA

Glassource



ART & CULTURAL

SPECTRUM PUBLIC ART

📍 Perth, Western Australia

🏗️ Cooling Brothers





ART & CULTURAL HOTEL TORREMAYOR

📍 Santiago, Chile

🏢 Glasstech, Chile





ART & CULTURAL

THE TOWER - CHRISTIANSBORG PALACE

📍 Copenhagen, Danmark

🏗 Glaseksperthen





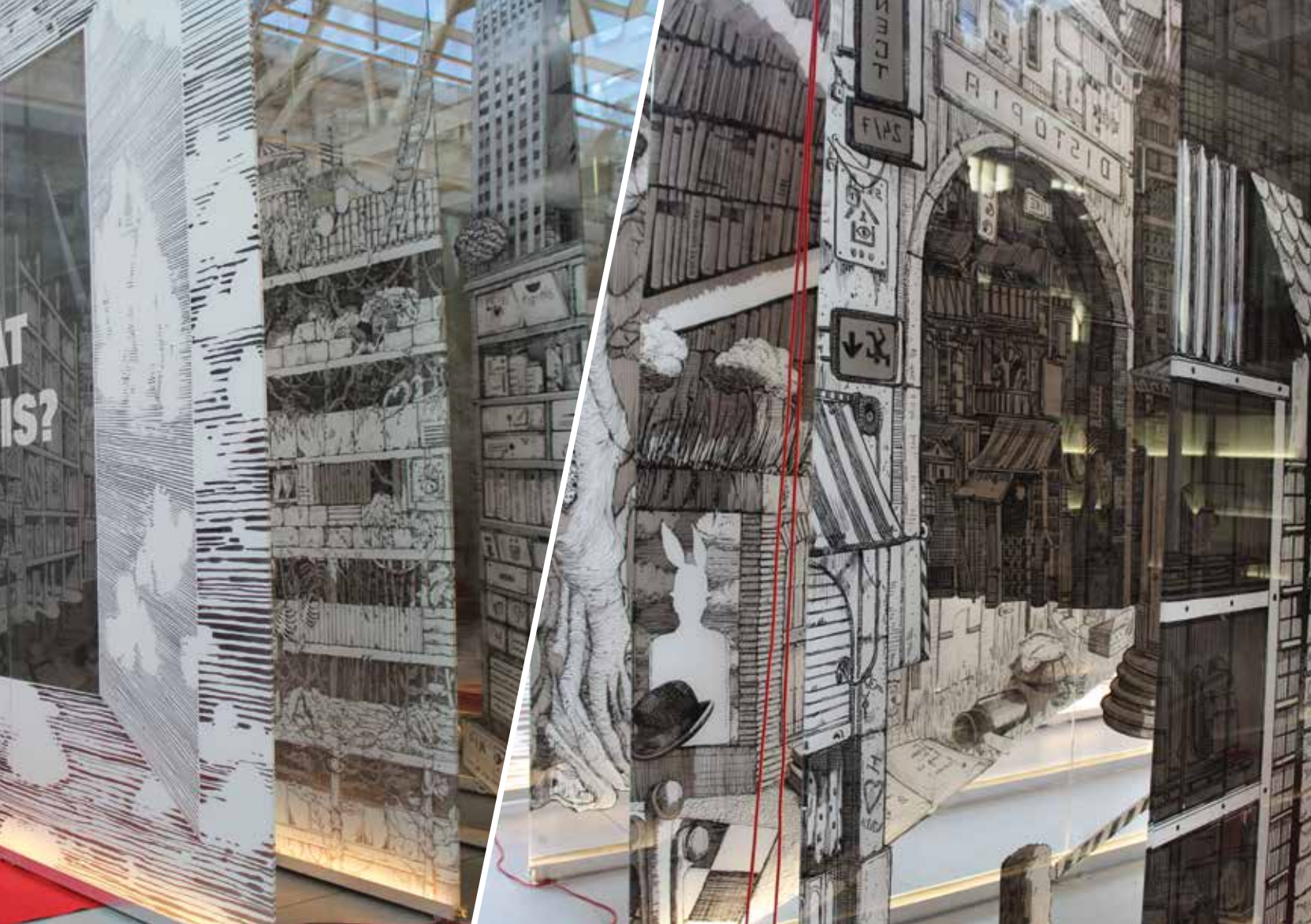
ART & CULTURAL

VIDROMAX - SHOWROOM

📍 Matosinhos, Portugal

🏠 Vidromax





CANOPIES

NY PRESBYTERIAN MEDICAL CENTER

📍 NY, USA

🏠 Alice® - GGI



ROMANO GUARDINI PLATZ

📍 Mainz, Germany

🏗️ Thiele Glas

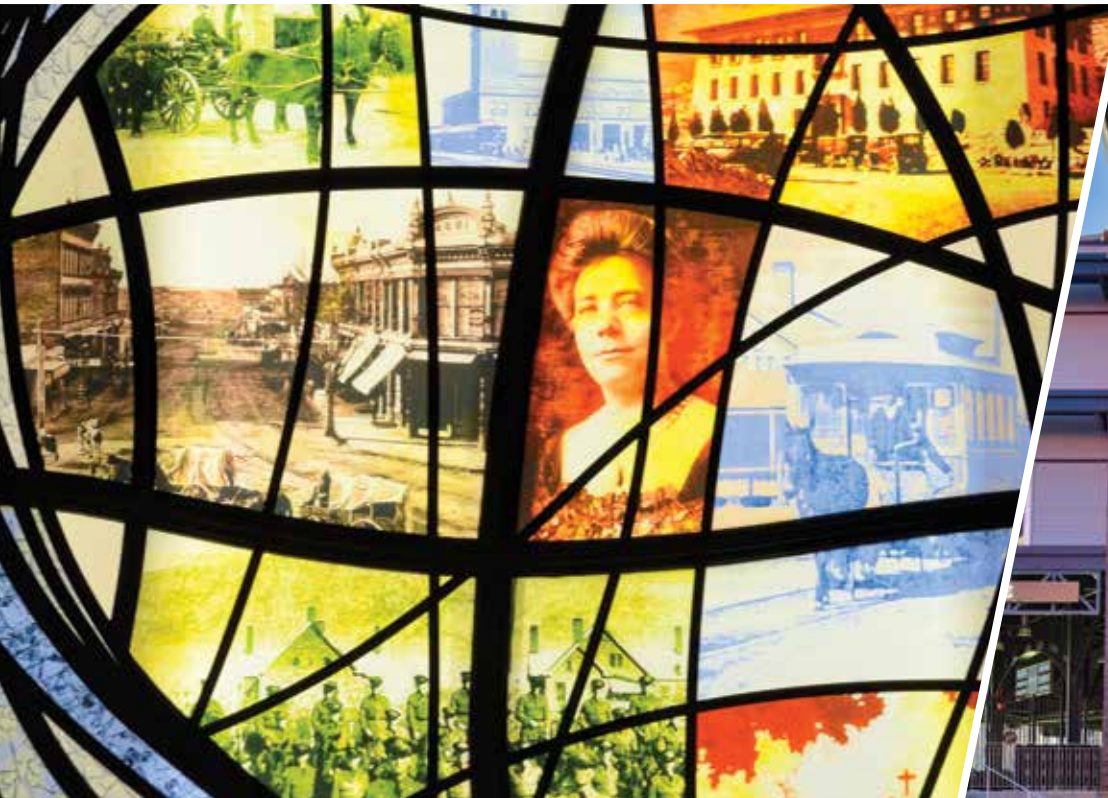


STAINED GLASS

EL PASO CLOCK TOWER

📍 El Paso TX , USA

🏗️ Viracon





STAINED GLASS

ST. MARY'S CHURCH

📍 Darwin, Australia

🏗️ Cooling Brothers





STAINED GLASS

STRASBOURG CATHEDRAL

📍 France

🏗 Saint-Gobain





SIGNAGE & MEMORIAL

MEMORIAL OF EMIL KOLBEN

📍 Czech Republic

🏗 IZOS



ANZAC MEMORIAL FOR OCEAN BEACH RSL

📍 Ocean Beach, Western Australia

🏠 Cooling Brothers



ABOUT DIP-TECH

Dip-Tech is the world's leading provider of digital in-glass printing solutions that combine the durability of ceramic inks with the versatility and quality of digital printing.

Dip-Tech helps architects express their artistic vision in: dividers, wall covers, bathrooms & showers, kitchens, balustrades & balconies, public art, canopies, windows, façades, stained glass, signage & memorials, and other glass elements and also meet the full range of functional requirements and sustainable architecture goals.

Your local partner:

BarteltGLASBerlin GmbH
Sperenberger Str. 7
12277 Berlin (Marienfelde)

Tel. +49 30 72 39 09-0
Fax +49 30 72 39 09-33
info@barteltglas.berlin
www.barteltglas.berlin

www.dip-tech.com | sales@dip-tech.com

©2016 Dip-Tech Digital Printing Technologies Ltd. All rights reserved. Dip-Tech, the Dip-Tech logo, and Dip-Tech Spectrum are trademarks or registered trademarks of Dip-Tech Digital Printing Technologies Ltd. and may be protected in certain jurisdictions. All other names are the property of their respective owners. All information is subject to change without notice.

